

Item: 4B

Date: 10/02/24

Transportation Priorities

Ryan Medlen, Senior Planner

Matthew Mauer, Government Affairs Manager

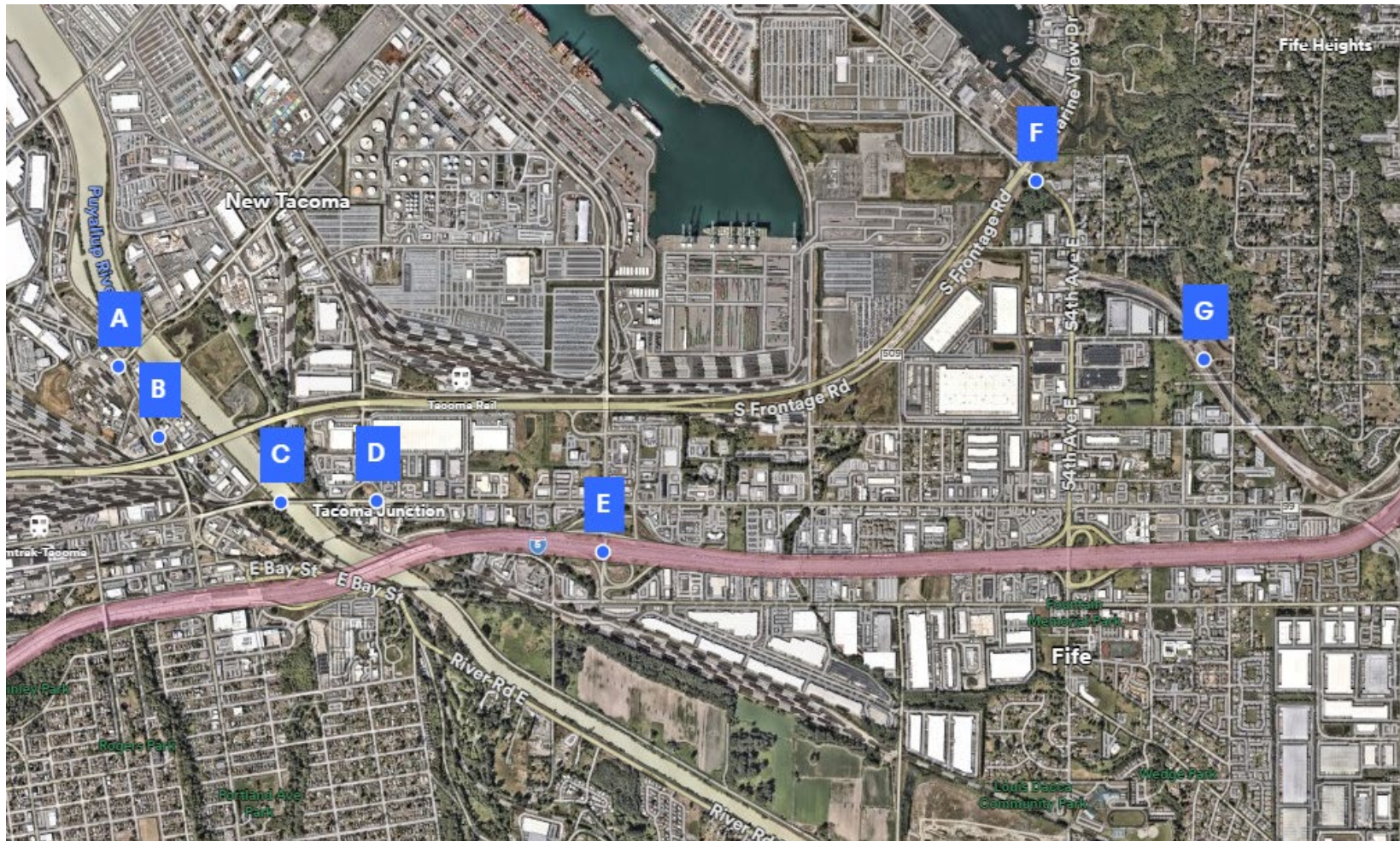
Joint Study Session: Fife City Council & Port of Tacoma Commission

Date: October 2, 2024



- Port of Tacoma Priority Projects Overview
- Portland Ave and Lincoln Ave
- Milwaukee Ave and Pacific Hwy
- Fishing Wars Memorial Bridge

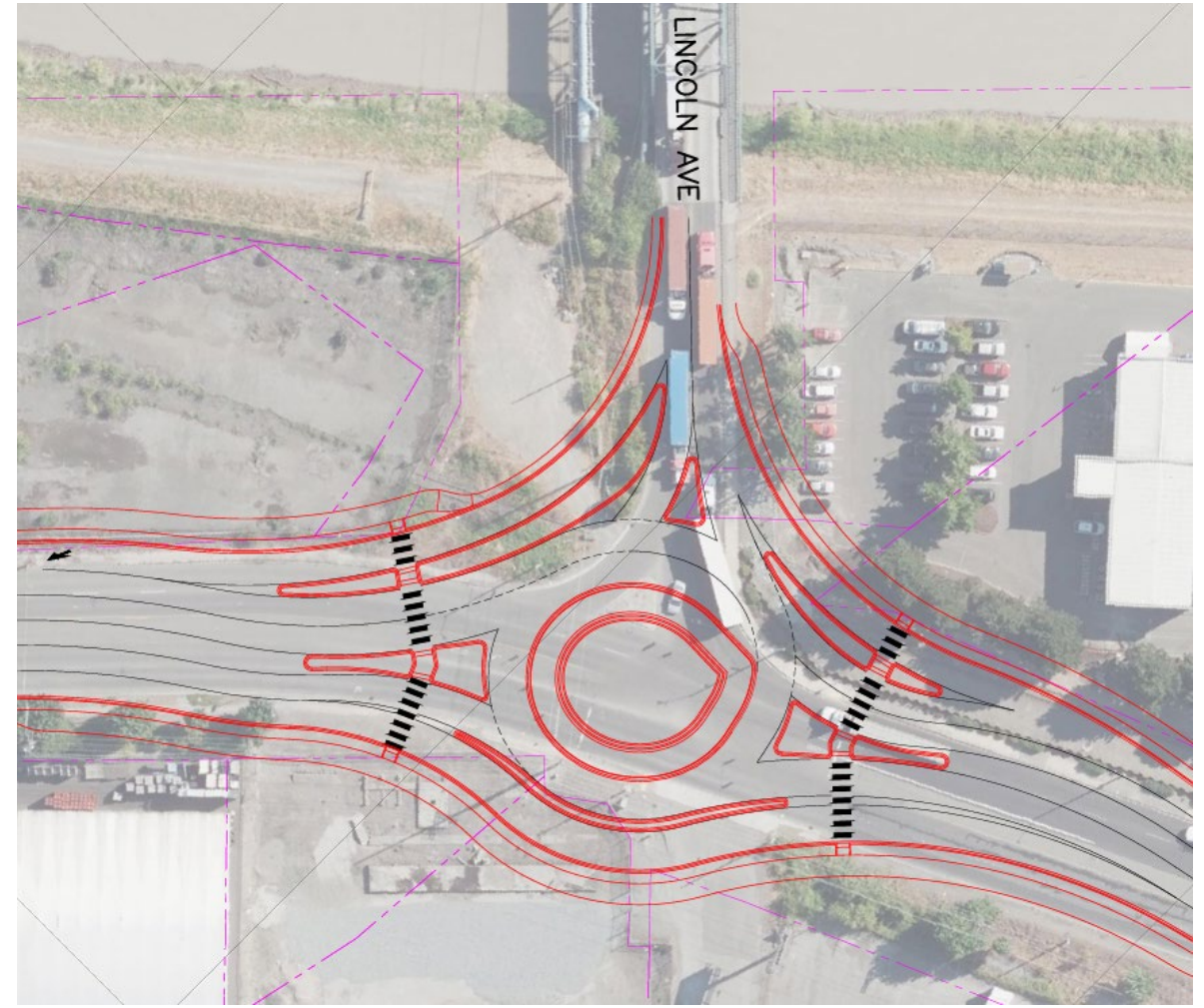
Port of Tacoma Priority Projects



A	Portland Ave and Lincoln Ave Intersection Improvements
B	Portland Ave Freight Access Improvements
C	Fishing Wars Memorial Bridge
D	Milwaukee Way and Pacific Hwy Intersection Improvements
E	Port of Tacoma Rd Interchange
F	54 th Ave additional left turn lane at SR 509
G	SR 167 Completion

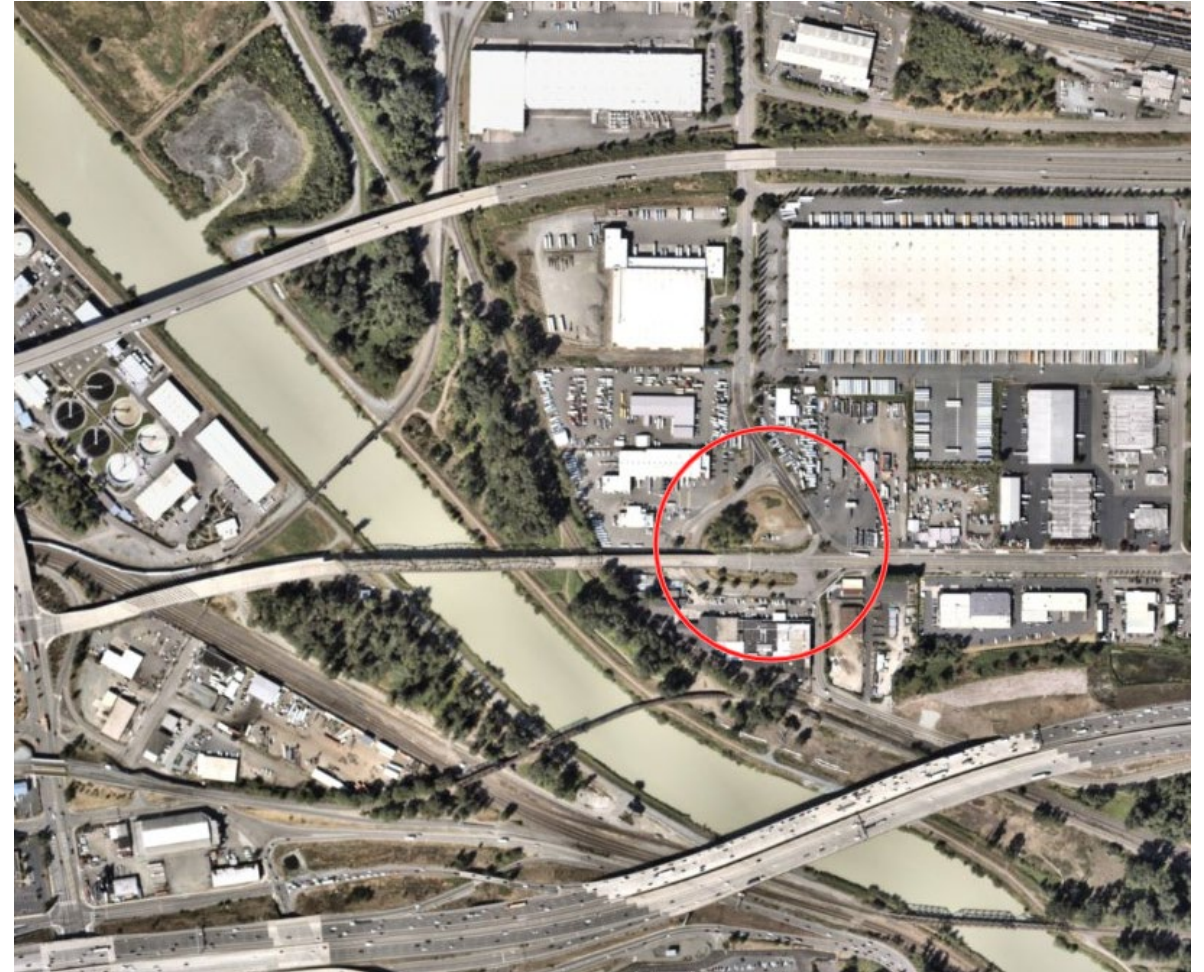
Portland Ave and Lincoln Ave

- At Portland Ave and Lincoln Ave, traffic modeling found a roundabout to have the best results in terms of reducing travel time delays.
- There is no preliminary engineering design yet, so constructability still needs to be confirmed.
- The City of Tacoma may receive earmark funding to advance design alternatives at this intersection.



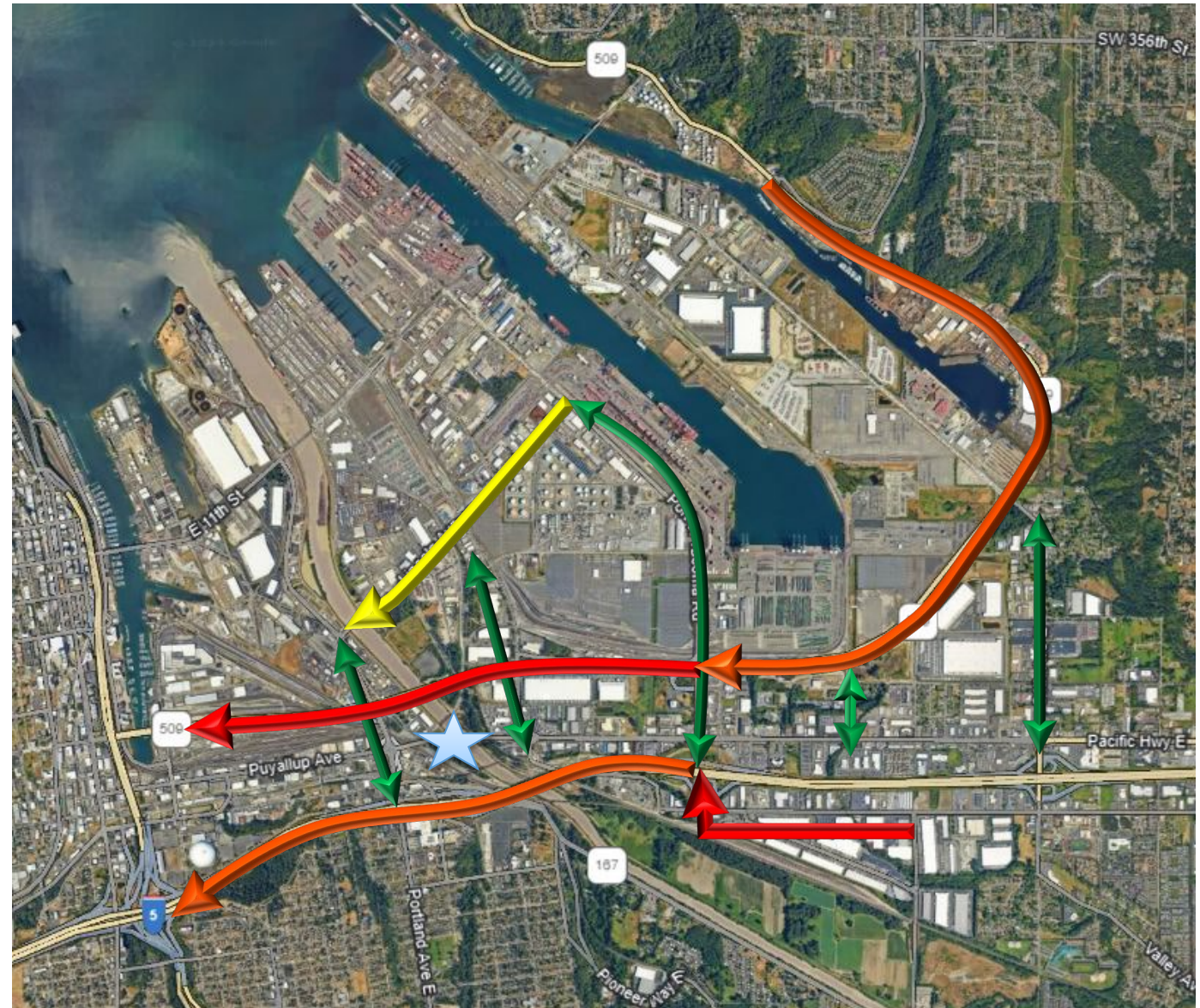
Milwaukee Way and Pacific Hwy

- No specific designs have been evaluated, but Port staff is coordinating with the City of Tacoma to look at options early in the design for the new Fishing Wars Memorial Bridge.
- Port modeling found there are some maritime cargo terminals where Milwaukee Way provides better travel times to Pacific Hwy.



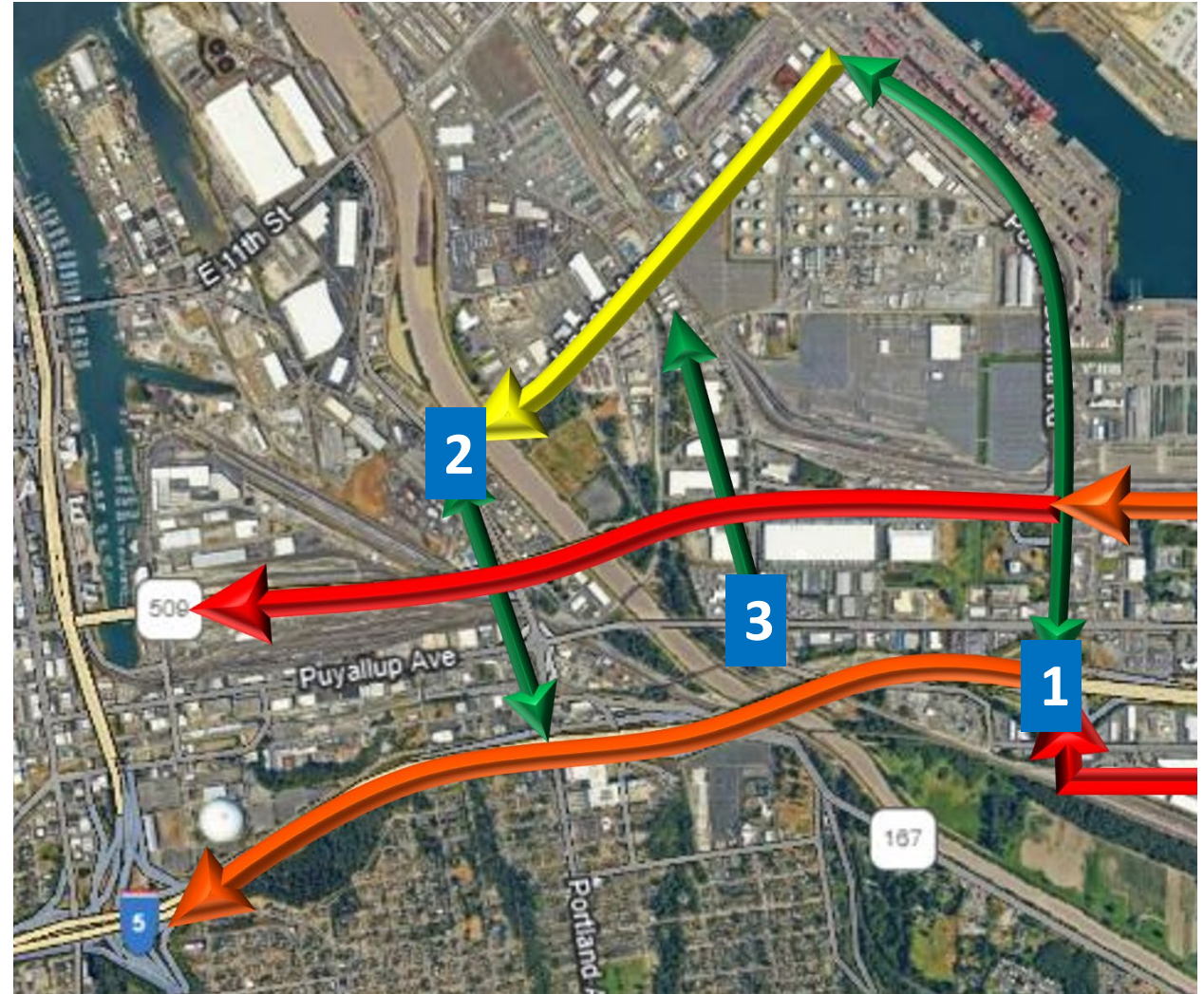
Impact of FWMB Closure

- Port of Tacoma work to establish the priority projects was done prior to the FWMB closure, but the impacts to traffic support these being the priority projects.
- In the month following the bridge closure, the greatest average reduction in vehicle speed (red and orange) was during the PM Peak on:
 - SR 509 (Southbound)
 - 20th St E and Port of Tacoma Rd
 - I-5 (Southbound)
- Moderate reduction (yellow) in average vehicle speed on Lincoln Ave (Westbound) during the PM Peak.

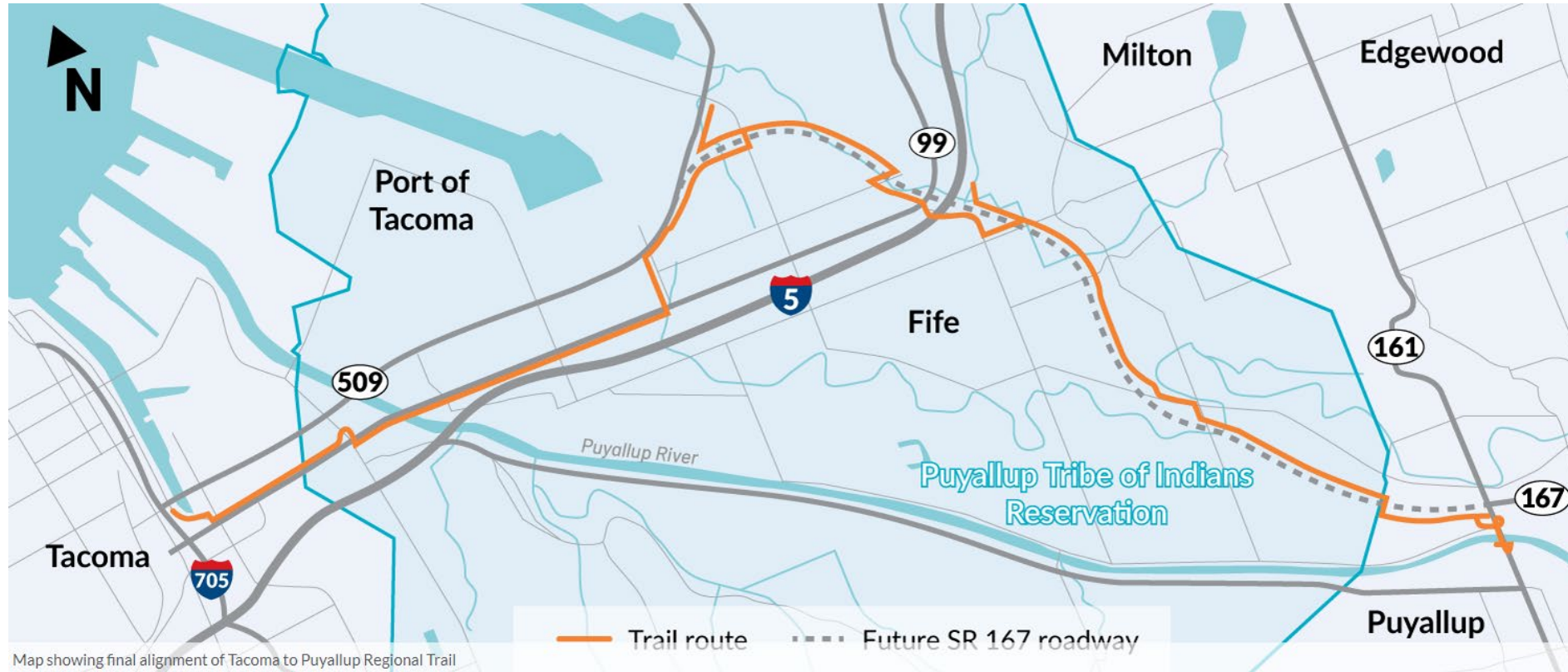


Key FWMB Related Priority Projects

- Priority transportation projects are identified on the affected corridors.
 1. Port of Tacoma Rd Interchange.
 2. Improvements at the intersection of Portland Ave and Lincoln Ave.
 3. As the City of Tacoma advances design for the new Fishing Wars Memorial bridge, we will engage with them about Milwaukee Way and Pacific Hwy.



Fishing Wars Memorial Bridge



In addition to benefits for general traffic, replacing FWMB will also lift the weight restriction creating opportunities for freight and transit, as well as be widened to support a regional multimodal connection.



Thank You

Questions & Discussion



Ryan Medlen
Senior Planner
rmedlen@nwseaportalliance.com